

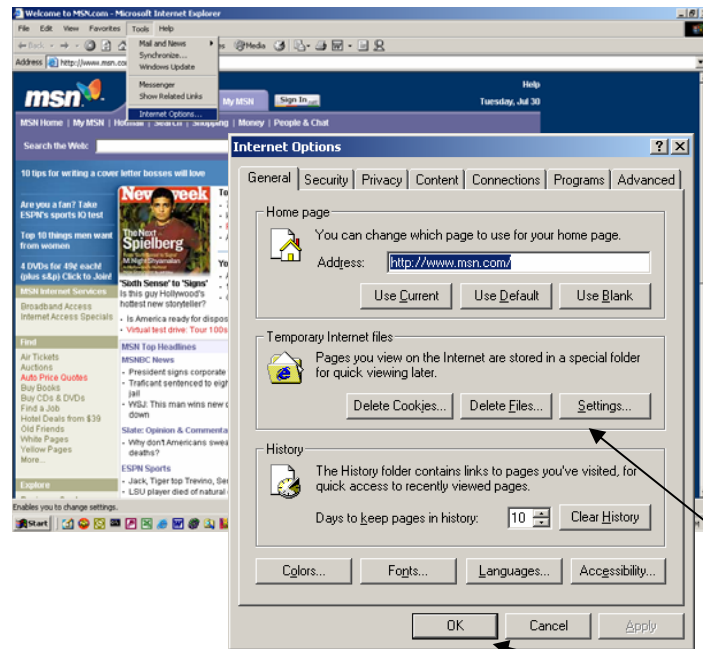
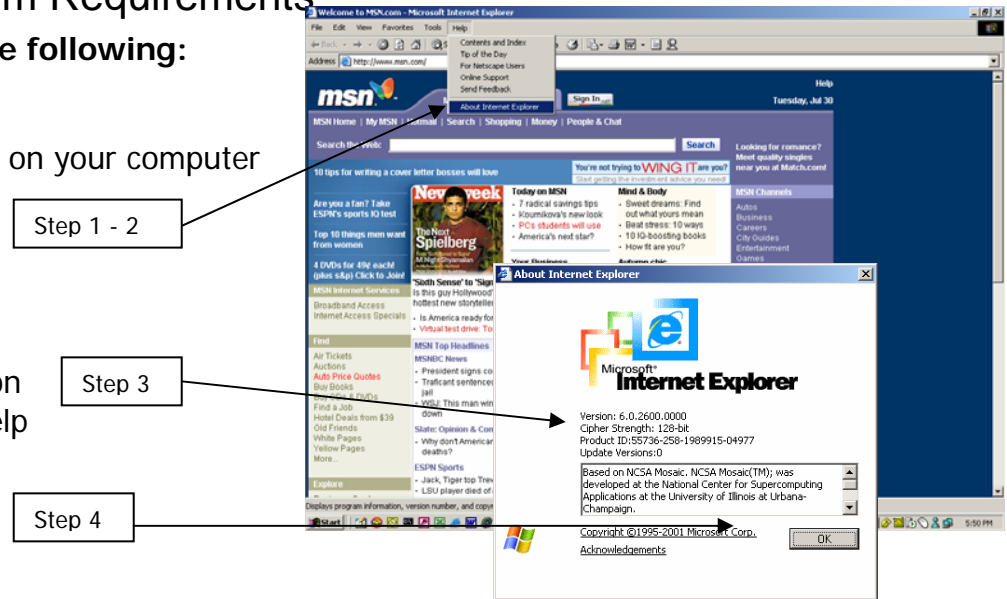
EdSoft System Requirements

In order to access the EdSoft system, you will need the following:

- A computer connected to the Internet
- An Optimized Internet Explorer 5.5 or greater installed on your computer

To check which version of Internet Explorer

- Step 1: Click **Help** in the main toolbar
- Step 2: Click **About Internet Explorer**
- Step 3: Check the Version Number (in this case Version 6.0) If your version is not 5.5 +, please contact the Help desk.
- Step 4: Click **OK**



Optimize Browser Settings

- Step 1: Click **Tools** in the main toolbar
- Step 2: Select **Internet Options**. Another window will open
- Step 3: From the **General** tab, select **Settings**
- Step 4: Change from 'Automatically' to 'Every visit to the page'
- Step 5: Click **OK** in Settings

