




IRVING ISD

GRADUATION

TOOLKIT



Globe Life Field

GLOBE LIFE FIELD

734 STADIUM DR. ARLINGTON, TX 76011

#IrvingISDGrads

TABLE OF

CONTENTS

4

Letter from
the Superintendent

5

Graduation Ceremony
Dates and Times

6

House Rules

7

Graduation Rehearsal
Information | Guest and
Ticket Information

8

Day-of Procedures for
Students | Entrance
Information

9

Parking Map
and Guidelines

10

Stadium
Seating Map

11

Photos | Dismissal

LETTER FROM SUPERINTENDENT MAGDA A. HERNÁNDEZ

Dear Parents and Students of the Class of 2024,

Irving ISD has worked diligently to design your graduation ceremony at Globe Life Field in Arlington, Texas, that will enable you to have a first-class graduation experience. This is your day, and we are so excited to celebrate all that you have achieved!

In this graduation toolkit, you will find information to ensure a successful graduation ceremony including ticket distribution, parking information, safety precautions and more. This toolkit can also be found on the graduation website at IrvingISD.net/Graduation.

Graduation is the culmination of many years of hard work and grit, as well as a symbol of the love and support of your loved ones and the #heartwork and dedication of all of the educators who surround you. I am incredibly proud of you, and I look forward to celebrating you soon.

Congratulations, Class of 2024! I will see you at Globe Life Field!

Sincerely,



Magda A. Hernández
Irving ISD Superintendent





GRADUATION CEREMONY

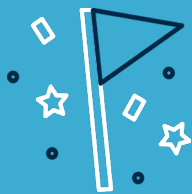
DATES AND TIMES

SATURDAY | JUNE 1

Singley Academy: 8 AM
MacArthur High School: 12 PM

Irving High School: 4 PM
Nimitz High School: 8 PM

HOUSE RULES



Tailgating is not permitted. Congregating before and after each ceremony is prohibited.

Heels are not recommended. Wedges and espadrilles are encouraged.

Bags are allowed, but must fit the size requirements of 16" x 16" x 8." Exceptions are for those that are carried for medical reasons or manufactured diaper bags that accompany infants and young children.

Concession stands **WILL** be open on the main concourse. No cash will be accepted. Credit/debit only. Students and guests may bring in one sealed plastic bottle of water.

No signs, air horns or outside flowers will be allowed into Globe Life Field. Flowers will be available for purchase at an onsite vendor.

No balloons, glitter or confetti.



GRADUATION REHEARSAL INFORMATION

Each high school will host a mandatory graduation practice with the Class of 2024 to review graduation ceremony procedures including arrival times, ceremony sequence and safety measures, as well as ticket pickup information, etc. Your high school will contact you with a date and time for this mandatory practice.



GUEST AND TICKET INFORMATION

Irving ISD is not limiting the number of guests that can attend graduation. **Guests will be able to sit anywhere within the seating area and will NOT need a ticket for entrance.**

Tickets are required for all students graduating. Campuses will contact you with information, including date and time, to pick up your ticket. Again, guests of graduates will NOT need a ticket to enter.

DAY-OF PROCEDURES FOR STUDENTS

Students will need to be in their graduation cap and gown and present their ticket for admittance into the venue. Students will be required to open their graduation gowns at the WEST VIP entrance to ensure there are no loose items inside of the gown. Students may not decorate their graduation caps.

Students need to arrive 1 hour before the event to be seated. The graduate's ticket will provide directions to their assigned seat. Students should sit in their assigned seat.

ENTRANCE INFORMATION

GUESTS / FAMILIES

Doors for guests/families will open 1 hour prior to the ceremony start time. Guests/families must enter at the **SOUTHWEST entrance**. Tickets are NOT required for entrance into the ballpark.

STUDENTS

Students need to arrive 1 hour early to be seated. Students will enter the **WEST VIP entrance** and present their ticket for admission.

STAFF

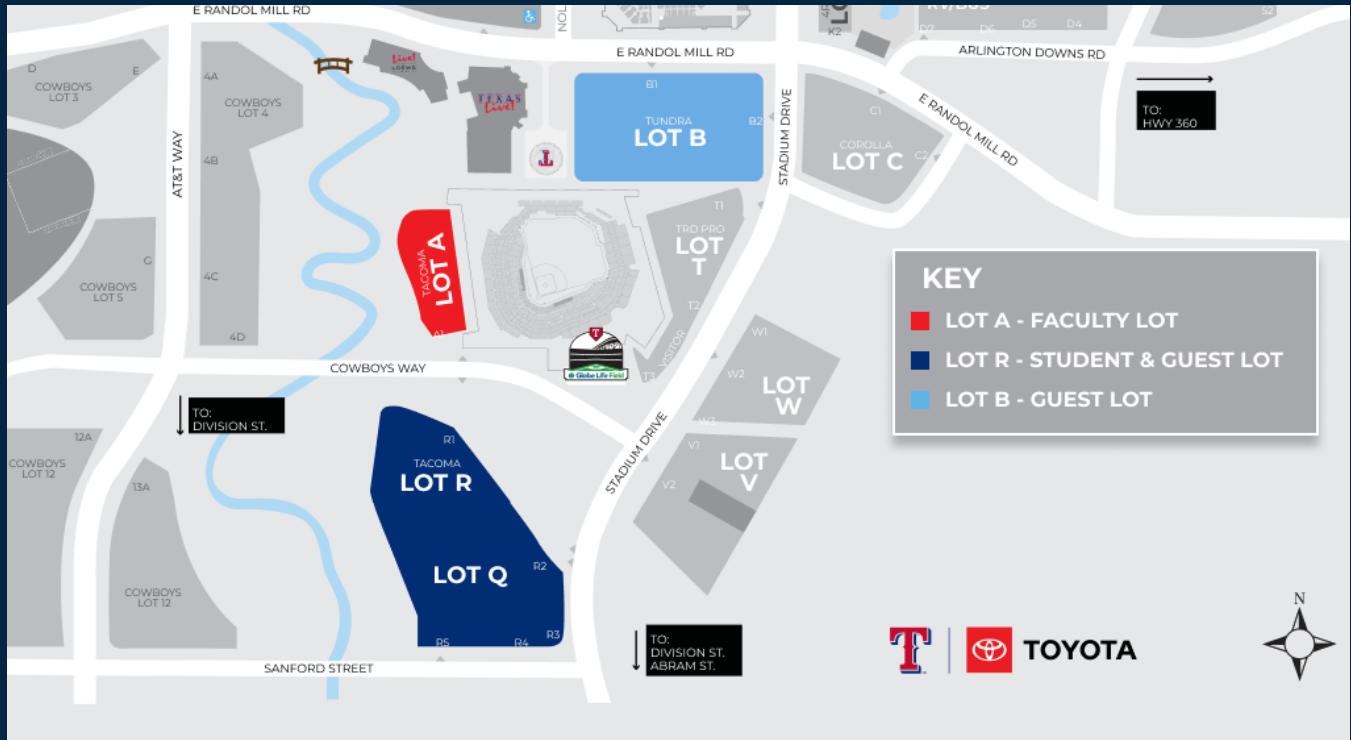
Faculty and staff can arrive up to 1.5 hours prior to the ceremony start time. Faculty and staff will enter through the **WEST VIP entrance**. All staff must wear their Irving ISD badge. Tickets are NOT required for entrance into the ballpark.

PARKING MAP AND GUIDELINES

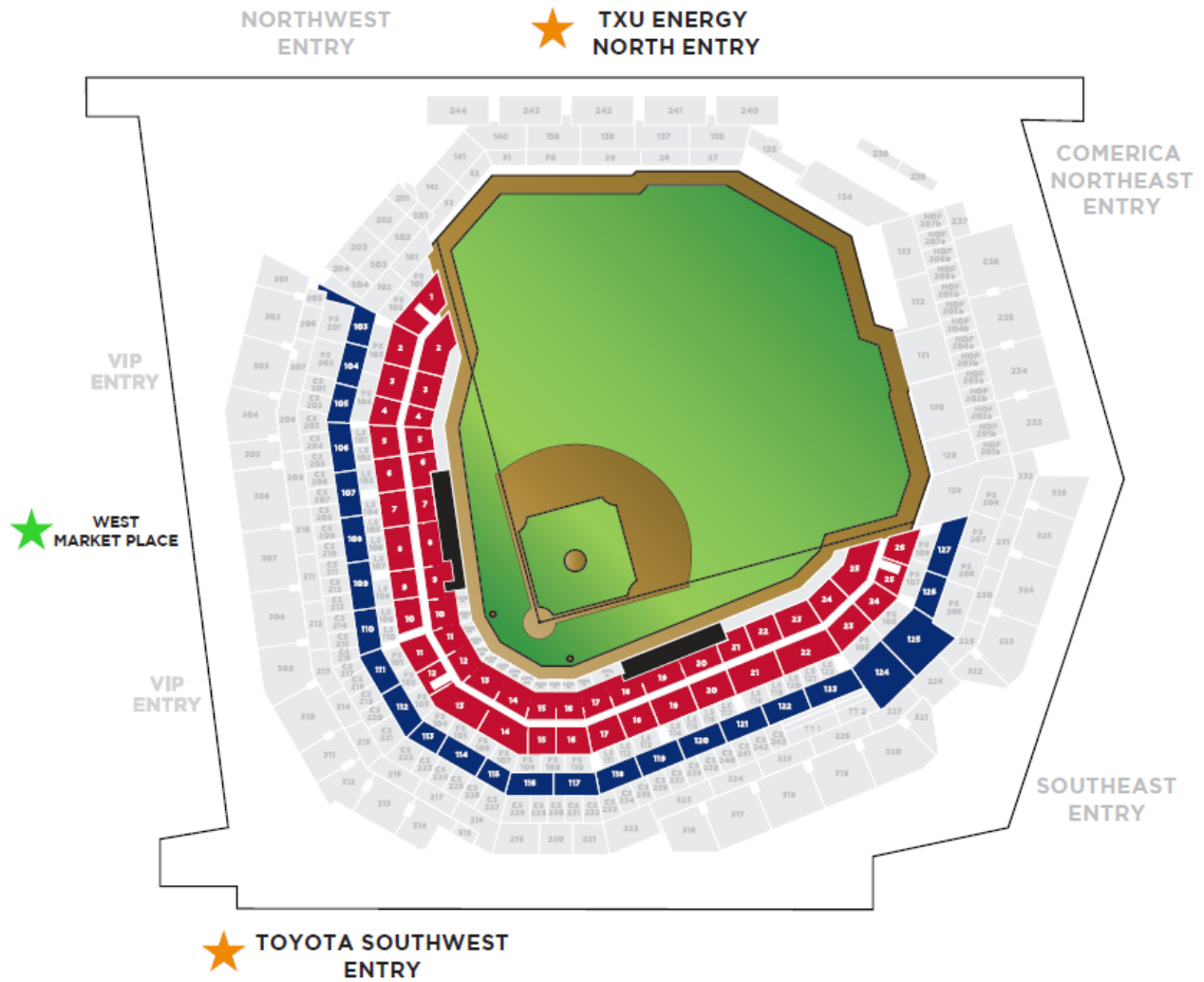
Parking is free.

Irving ISD faculty and staff will park in **LOT A**.

All graduates and guests/families will park in **LOT R**.



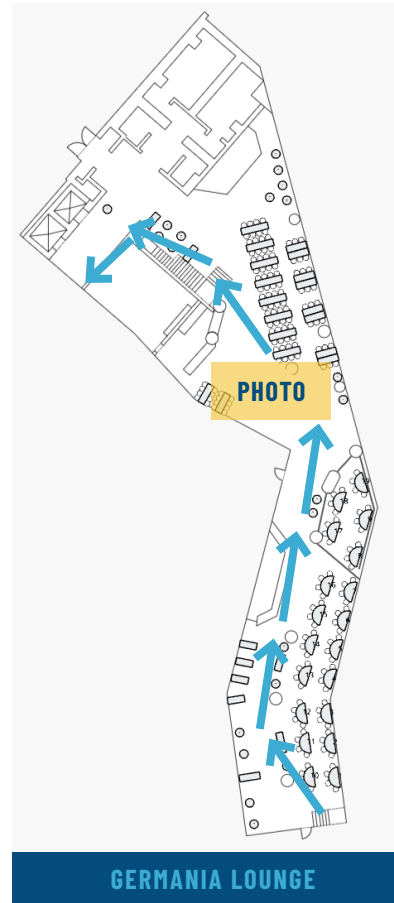
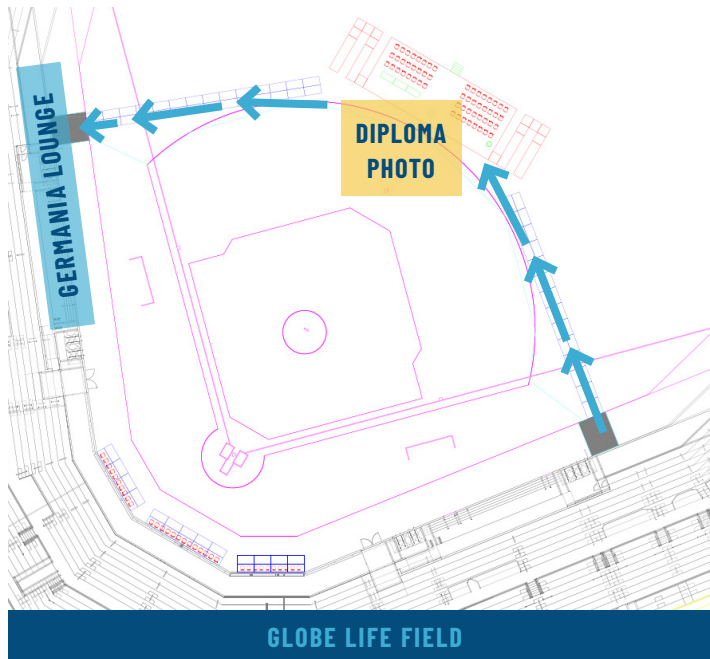
STADIUM SEATING MAP



<p>STUDENT & FACULTY ENTRANCE</p> <p>★</p> <p>STUDENT SEATING</p> <p>■</p> <p>LOWER CONCOURSE</p>	<p>GUEST ENTRANCES</p> <p>★</p> <p>GUEST SEATING</p> <p>■</p> <p>MAIN CONCOURSE</p>
---	---

PHOTOS

Graduates will walk down the American Airlines Lounge, cross the field from Right Field to Left and approach the stage to receive his/her diploma to take a photo. Then, they will return through the Germania Lounge before going back up to their seats. In the Germania Lounge, a professional photographer will take one official photo only. The photos will be posted at IrvingISD.net/PhotoGallery a week after graduation.



DISMISSAL

Graduates will participate in a recessional. Parents will be able to meet their graduate outside the ballpark, near the southwest VIP entrance where students entered. Congregating after the ceremony is prohibited.



