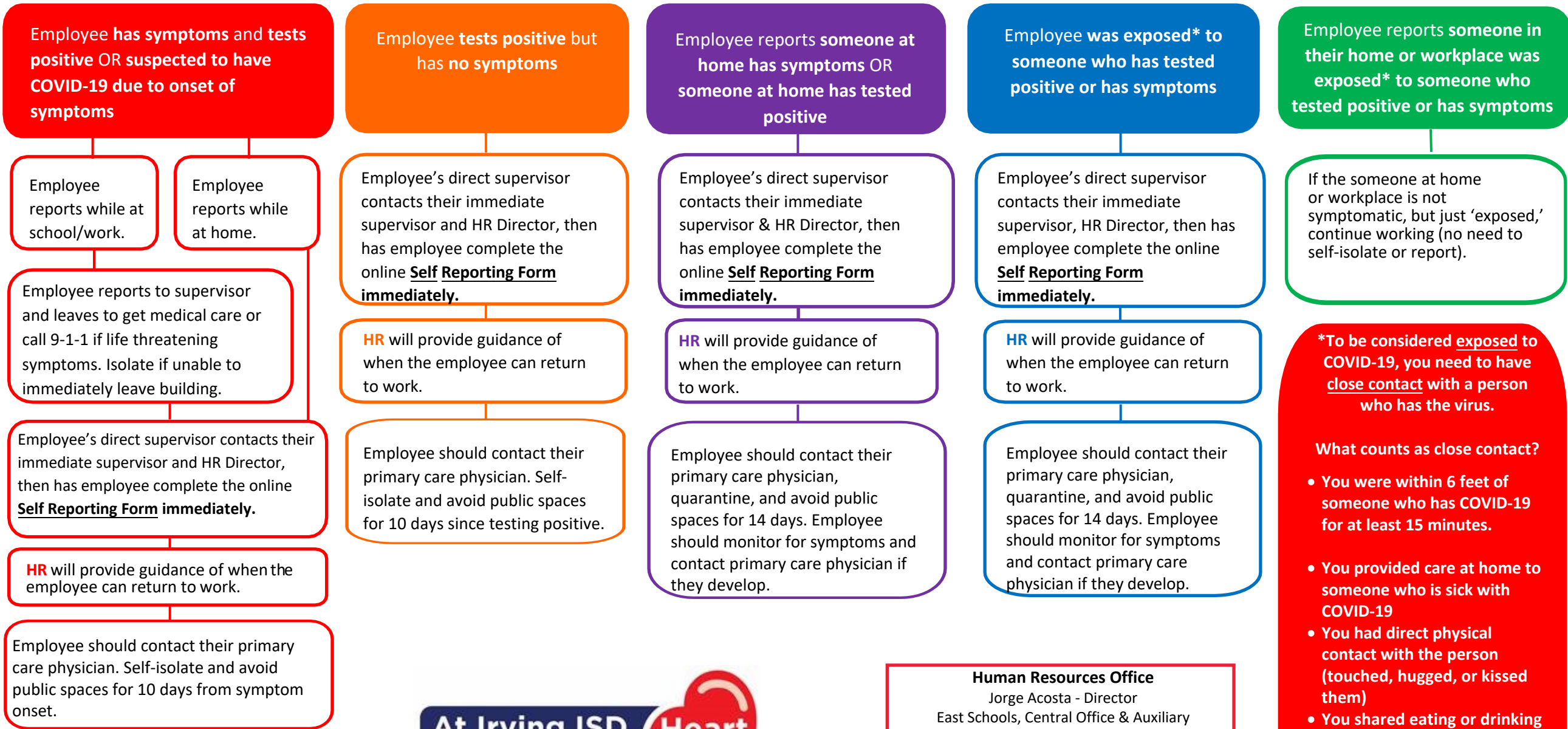


Irving ISD Employee/Workplace Process Map for COVID-19



Human Resources Office
 Jorge Acosta - Director
 East Schools, Central Office & Auxiliary
 jacosta@irvingisd.net

Katie Gilleland - Director
 West Schools, Special Education & Guest Educators
 cgilleland@irvingisd.net

Dr. Jeannine Porter - Chief of Employee Services
 jporter@irvingisd.net

*Human Resources makes all determinations regarding whether an employee gets sent home, when they return, and any changes to work settings.

***To be considered exposed to COVID-19, you need to have close contact with a person who has the virus.**

What counts as close contact?

- You were within 6 feet of someone who has COVID-19 for at least 15 minutes.
- You provided care at home to someone who is sick with COVID-19
- You had direct physical contact with the person (touched, hugged, or kissed them)
- You shared eating or drinking utensils
- They sneezed, coughed, or somehow got respiratory droplets on you